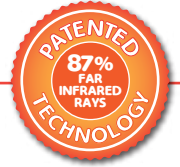
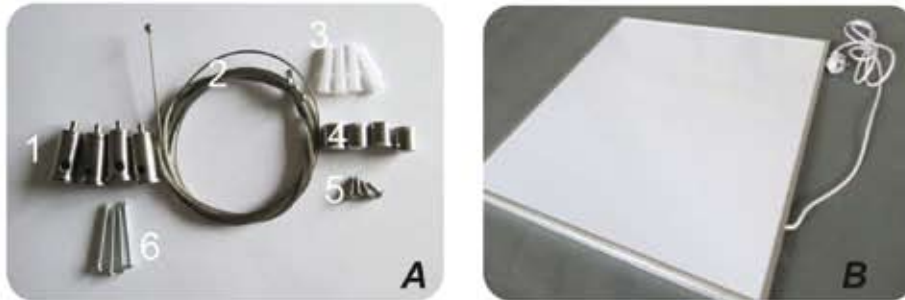


# Ceiling Hanging

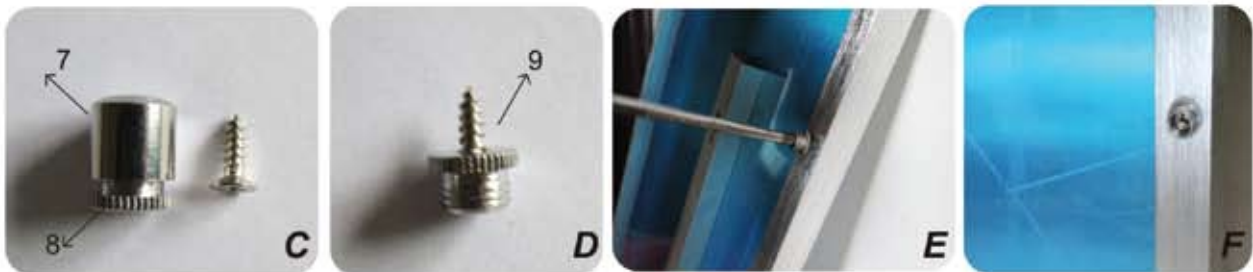


## INSTRUCTIONS FOR USE OF WIRE MOUNTING KIT

STEP 1: Get all accessories ready, as per pic. A.



STEP 1: Mark out four evenly spaced holes on the long side of each frame. Split part 4, as per pic. C. Fix part 9, into the four prepared screw holes, as per pic. E.



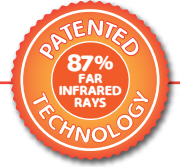
STEP 3: Insert the wire line into part 7, as per pic. I.



STEP 4: Fix part 10, onto the frame as per pic. L.



# Ceiling Hanging

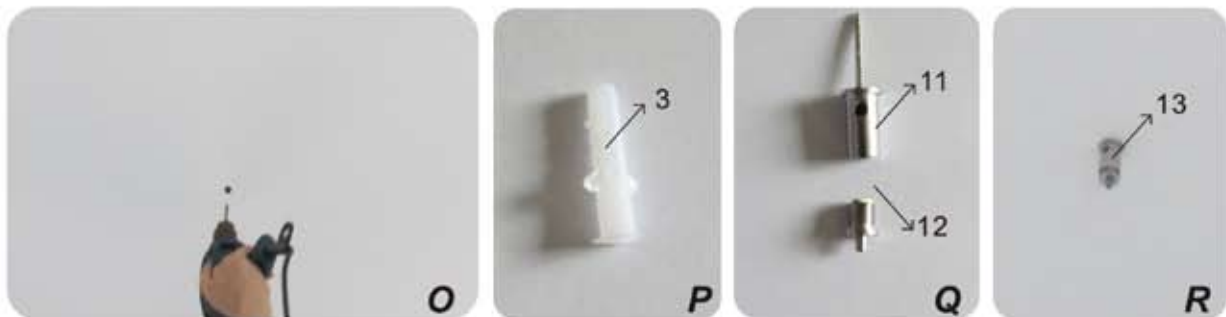


## INSTRUCTIONS FOR USE OF WIRE MOUNTING KIT

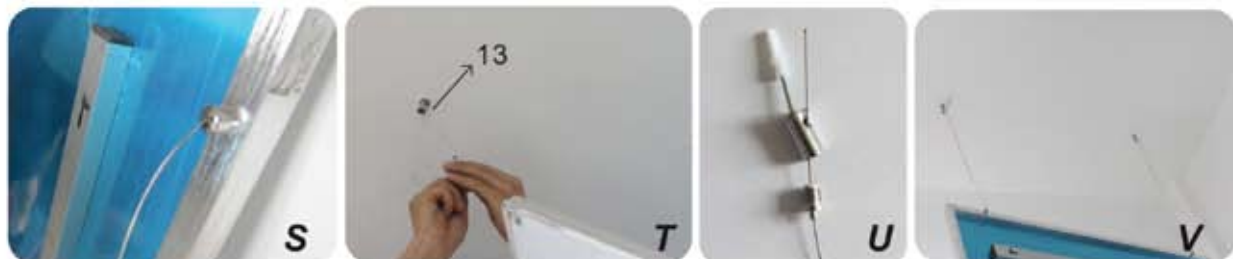
STEP 5: Confirm the distance between four prepared holes on the frame, as per pic. M.  
Mark on the ceiling as per pic. N.



STEP 6: Make four holes on the marked ceiling points, as per Pic. O. Put the plastic screw part 3, into the ceiling. Put the screw part 6, into part 1, then fix the part 11 onto the ceiling as per pic. R.



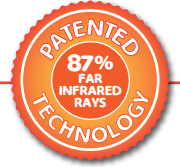
STEP 7: Connect the end of the wire part 10 with part 13, as per pic. T and pic V.



STEP 8: Adjust the distance between the panel and ceiling as required.



# Ceiling Hanging

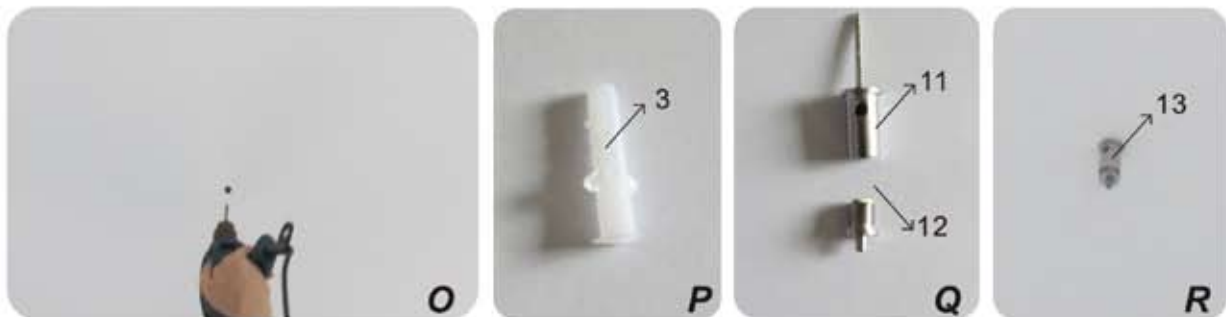


## INSTRUCTIONS FOR USE OF WIRE HANGING KIT

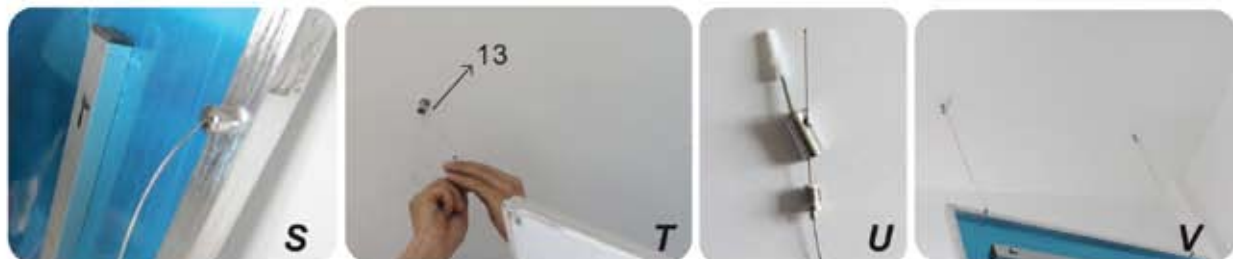
STEP 5: Confirm the distance between four prepared holes on the frame, as per pic. M.  
Mark on the ceiling as per pic. N.



STEP 6: Make four holes on the marked ceiling points, as per Pic. O. Put the plastic screw part 3, into the ceiling. Put the screw part 6, into part 1, then fix the part 11 onto the ceiling as per pic. R.



STEP 7: Connect the end of the wire part 10 with part 13, as per pic. T and pic V.



STEP 8: Adjust the distance between the panel and ceiling as required.

